

## The Word

Selected Scriptures

### Introduction

### The Reliability of the Bible

- We can rely on the Bible because of its unity. (Matthew 5:17–18)
- We can rely on the Bible because of the quantity of early manuscripts. (2 Timothy 3:16–17)
- We can rely on the Bible because of its fulfillment of prophecy. (2 Peter 1:19–21)

### Our Response to the Bible

- Believe it, read it and live. (John 6:66–69; Matthew 4:1–11; Psalm 1:1–3)
- Disbelieve it, reject it and perish. (Deuteronomy 6:12–17; Psalm 1:4–6)

### Application—Psalm 1:1–2

### Memorize:

#### Psalm 1:1–2

*“Blessed is the man who does not walk  
in the counsel of the wicked,  
nor stands in the way of sinners,  
nor sits in the seat of mockers.  
But his delight is in the law of the Lord  
and on it he meditates day and night.”*

## Sunday Schedule at BPEFC

### 9:00 AM

#### Worship Service

Sanctuary

Nursery (Birth to two years)	Room 100
Chicks (Birth date in 2009)	103
Lambs (Birth date in 2008)	103
Giraffes (Birth date in 2007)	104
5s and K (Birth date in 2005 & 2006)	104
Children’s Church (Gr. 1–6)	Fellowship Hall

#### Adult Bible Fellowships

20–30 Somethings (Fall Focus: Parenting)	112/113
Mosaic (Singles/Marrieds, All Ages)	108/109

### 10:30 AM

#### Worship Service

Sanctuary

Nursery (Birth to two years)	Room 100
Chicks (Birth date in 2009)	102
Lambs (Birth date in 2008)	103
Giraffes (Birth date in 2007)	104
Starfish/5s and K (Birth date in 2005 & 2006)	105
Apples/5s and K (Birth date in 2005 & 2006)	106
Route 252 Oasis (Grades 1–6)	Fellowship Hall
Living Proof (Grades 7–12)	Youth Room

#### Adult Bible Fellowships

Salt (Parents of Pre-Teens—Young Adults)	114
In-Betweeners (Singles/Marrieds, 55+)	112/113
Prime Timers (Singles/Marrieds, 70+)	

### BPEFC Pastoral Staff

- Rick Ensrud** - Senior Pastor - rensrud@bpefc.org - ext. 11  
**Dan Carlson** - Adult Ministry Pastor (50+) - dcarlson@bpefc.org - ext. 12  
**David Durey** - Family Life/Exec. Ministries Pastor - ddurey@bpefc.org - ext. 13  
**Jeff Gagnon** - Executive Ministries/Missions Pastor - jgagnon@bpefc.org - ext. 22  
**Leane Gondek** - Children’s Ministries Pastor - lgondek@bpefc.org - ext. 27  
**Josh Major** - Young Adult Pastor - jmajor@bpefc.org - ext. 14  
**Nate Miller** - Student Ministries Pastor - nmiller@bpefc.org - ext. 15  
**Luke Turner** - Worship Ministries Director - lturner@bpefc.org - ext. 37

**October 9, 2011**



7849 West Broadway  
Brooklyn Park, MN 55445  
763-391-6140  
Emergency: 763-315-0906  
Fax: 763-391-6401  
www.BrooklynParkChurch.org

## Welcome to Brooklyn Park Church!

We're so glad you have joined us today. Our goal is to help you connect with God in worship and connect with others in meaningful relationships. Please let us know if we can help you in any way.

### Worship Services Offered:

**9:00 AM:** Traditions

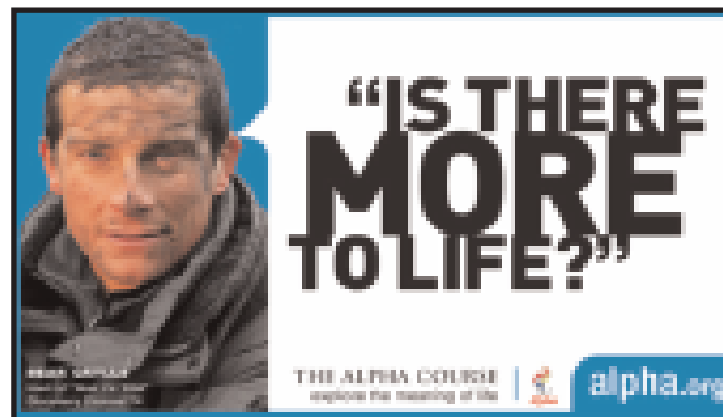
**10:30 AM:** Multi-Cultural

Guests . . . after the service, you are invited to the Guest Reception Area (in the West Foyer) to meet with staff and learn more about our church.

## All-Church News

- **New Fall Small Groups:** If you're looking for a way to meet people and get connected, a small group is just what you need. New groups are forming now. Stop by the table in the Foyer to sign up.
- **Alpha Sunday Nights:** Join us for dinner and groups starting at 5:30 PM. Courses Offered: *Alpha*—Find answers to the meaning of life; *Freedom in Christ*—Resolve issues from your past; *Bible Overview*—Learn to navigate the Scriptures; *Contagious Christian*—Learn ways to share your faith.
- **Awana for Kids & Small Groups for Student Ministries:** Wednesdays, 6:30 PM. It's not too late to join us! Bring a friend!
- **Hebraic Roots Conference:** October 13—15, St. Michael's Church. Please see the enclosed insert for details.
- **Next Step Class:** Saturday, October 15, 9:00 AM—12:00 PM. Learn more about our church ministries and membership. To register for the class, please sign up today at the Information Desk.
- **Seniors Luncheon:** Wednesday, October 19, 12:00 PM. Cost: \$5.00. If you plan on attending, sign up at the Information Desk.
- **Let's Go Loafing:** Saturday, October 22, 9:30 AM. Welcome new neighbors to the community. Deliver a loaf of bread and church literature. It's an easy, effective way to show that we care. Call the Office if you are interested.
- **Child Dedication:** Sunday, October 23, 9:00 & 10:30 AM Worship Services. If you would like your child dedicated that day, please contact Connie in the Church Office.
- **Second Harvest Food Distribution:** Friday, October 28, 6:00—8:00 PM. **Volunteers are needed for shifts between 1:00—9:00 PM.** All volunteers (returning and new) must sign up *prior to each* distribution at the Info Desk or the web site: [www.BrooklynParkChurch.org/2harvest](http://www.BrooklynParkChurch.org/2harvest). If you haven't served at SH before, now is a great time to jump in and help!
- **Congregational Meeting:** Sunday, October 30, 12:15 PM. This is for all members and regular attenders. Mark your calendar. More details to come.

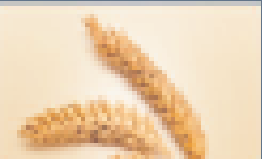
For more information on other church news, see *News & Notes*.



SECOND HARVEST HEARTLAND  
*Joining forces to end hunger*

**Food Distribution**  
**October 28, 6:00 — 8:00 PM**

Volunteers needed especially in the parking lot beginning at 3:30 PM.



**MISSION SUNDAY**  
Sunday, November 6

**Special Guest Speaker, Bobby Gupta**  
*Hindustan Bible Institute & College, Chennai, India*



9:00 & 10:30 AM Services &  
12:15 PM Multicultural Lunch

## Weekly Calendar

(For more details, visit [www.BrooklynParkChurch.org](http://www.BrooklynParkChurch.org).)

### Sunday, October 9

5:30 PM *Alpha Sunday Nights*

### Monday, October 10

### Tuesday, October 11

6:00 AM Men's Bible Studies  
6:00 PM Corporate Prayer  
6:00 PM *Celebrate Recovery & Support Group Meal and Worship*  
7:00 PM *Celebrate Recovery & Support Group Meetings*

### Wednesday, October 12

5:45—7:00 AM Intercessors' Prayer Time  
6:30 PM Kids *Awana*  
Student Ministries Small Groups  
Women's Bible Study

### Thursday, October 13

9:30 AM Women's Bible Study  
6:30 PM *Financial Peace University*

### Friday, October 14

### Saturday, October 15

9:00 AM *Next Step Class*

## Stewardship Matters

2011—2012 Annual Budget:	1,439,750
Budget needed fiscal year-to-date:	387,632
Giving/Revenue year-to-date:	327,713
Difference in budget needed and giving YTD:	(59,919)
Weekly budget needed:	27,688
Amount received October 2:	23,700
4 <i>Our Future</i> (Capital Campaign) Commitments:	1,050,000
4 <i>Our Future</i> Giving:	705,047

## Make Psalm 1:1—2 a prayer for you and your loved ones:

*“Father in heaven. Change my heart. Give me the will and resolve not to follow the advice of the wicked, or stand in the path of sinners or join in with scoffers. Instead, let me delight in your Word and meditate on it day and night. In Jesus' name, I pray. Amen.”*