

News & Notes

April 25—May 1, 2010

Brooklyn Park Evangelical Free Church
763-391-6140

ALL-CHURCH CORNER

Missions Trip to Ghana

Operation Dignity is an organization that does work in Ghana, and is planning a building project/missions trip for August of 2010. BPEFC members Jim and Kathy Sullivan are the founders of this organization, and would like to extend an invitation to BPEFC people to join them. There will be an informational meeting TODAY at 12:15 PM in the Conference Room for those interested. For more information, contact Carla Peterson at 763-537-4599.

Robbinsdale Women's Center Request

- RWC is looking for volunteers to do light housekeeping for our Center. If you have 1—2 hours available every other week, once each month, or every other month, you would be such a blessing to us! Please contact Joanne Eklund at (763) 531-9554 and let her know when you might be available.
- A "Walk for Life" takes place on Saturday, May 8 at 9:00 AM. By asking your friends, family, and co-workers for sponsorship, RWC is able to provide many services at no cost. You can make a difference by walking! For more information, visit the Care Ministry Kiosk for a flyer, call 763-531-9554 or go to www.robbsdalewomen.org.

Get in Shape—Run a Half Marathon!

Join Pastor Rick and other members of our church to train and run in a half marathon (about 13 miles) with *Team World Vision* on Sunday, August 22. To learn more, go to www.teamworldvision.org, or contact Alaina Grose at algrose@comcast.net.

Weekend Fishing Adventure

Sign up now for summer family fishing fun on June 4—6 at Camp Lebanon! Cost: Teens & Adults: \$65; Elementary Kids: \$35. For more information and registration form, visit the Information Kiosk.

Celebrate Recovery Garage Sale

On the weekend of June 4—5, BPEFC *Celebrate Recovery* is having a garage sale! Donate your gently used clothing to help support this ministry. Watch for drop off dates.

EFCA Night with the MN Twins

All EFCA North Central District Churches are invited for a night at Target Field on Monday, June 28, at 7:10 PM, Twins vs. Detroit Tigers. Discount tickets are available. For details, see a flyer on the back hallway bulletin board or call 952-259-4500.

Bass Player Needed

Our worship team is in need of another skilled bass guitar player to add to the worship band schedule. If you have a strong musical background and experience playing in a band, please call Worship Director Luke Turner at 763-391-6140, ext. 37, to schedule an audition. Thanks!

Lost & Found Items

If you have lost or misplaced something at church, stop by the Lost & Found (at the former Info Desk) to see if it's been found. Unclaimed items will be removed May 10.

Graduation Information

If you are graduating from high school or higher education, please get your name, school, open house, future plans, etc. to Jena at jpietari@bpefc.org.

Note of Thanks

"Thank you for all your prayers, gifts and sympathy cards. Our family deeply appreciates it." — Jim Englund

Please Let Us Know

Please fill out a Prayer Card or notify someone in the Church Office if there is a birth/death in your family, if someone is hospitalized, or if someone is having surgery.



CARE MINISTRIES

Parish Nurse, Mary Van Der Werf
Ext. 30, maryv@bpefc.org

Coming this Summer

There will be sessions for *GriefShare* and *First Place* (weight-loss) this summer on Tuesday nights. Watch for specific dates. Consider joining one of these groups or inviting others with whom you come in contact.

Immigrant Support Group

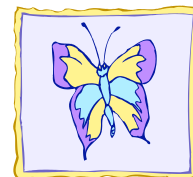
This supportive, revitalized group meets on Tuesdays at 7:00 PM! Join other immigrants to share your stories and discover ways to strengthen your coping mechanisms.

Counseling Services Through BPEFC

If you are in need of counseling services, please know that we're here to help. (counselor/specialties)

- Linda Gale—adults, couples, adolescents, marriage, abuse, anxiety, loss. Call 612-501-9515.
- Jim Farm—marriage, family, depression, anger, special needs children, men. Call 952-484-2485.
- Dave Harthan—marriage, depression, anger, grief. Call 763-425-3625.
- Leane Gondek—children and family systems. Call 763-391-6140, ext. 27
- Rachael Gusaas—couples, family, military reintegration, women, aging, grief. Call 763-614-7148.

For more information, visit www.BrooklynParkChurch.org.



YOUNG ADULTS (Ages 18—20-Something)

Pastor Josh Major, Ext. 14

Young Marrieds and Young Adults ABF

Join us Sundays from 9:00—10:15 AM. Enjoy breakfast, fellowship, prayer and a study before the Celebration Service (Room 112/113).



WOMEN'S MINISTRIES

Pastor David Durey, Ext. 13, 763-391-6140

Cheryl Southard, Team Leader

Laurel Jenson, Co-Leader

Women's Bible Studies Update

- The Wednesday night Beth Moore study is already completed, and the Genesis Precept study ends this week.
- The Thursday morning Bible study concludes on May 6, with a brunch. Thank you to Melissa Southard, Pat Catlin, Gail Lyon and Janine Bear respectively for their faithfulness in leading/teaching these classes.

Women's Tea was a great success!

- We thank God for all of the women who took part in making the morning so beautiful and fun! Many suggestions for other events have been spurred on by the great time we all had! Don't forget to check out the church's website for pictures from the morning.
- Thank you for all who purchased raffle tickets, jewelry and Swaziland goods at the Tea. We were able to raise the money needed to help with scholarships for Fall Retreat. We praise the Lord for your generous giving.

New Summer Bible Study Begins in May

Please contact Melissa Carey for further information concerning topic, time, dates and cost.



LIVING PROOF

Student Ministries

Pastor Jena Pietari, Ext. 15

Weekly Events

- **Youth Worship Service**
Sundays, 10:30 AM, Youth Room
- **Wednesday Small Groups**
6:30—8:00 PM, Youth Room (unless noted on Calendar)

Upcoming

- 4/25 **Return from Districts by 4:00 PM**
- 5/2 **Challenge '10 Meeting:** 12:15—1:30 PM, Youth Room. We'll order pizza—bring \$5.
- 5/23 **Youth Sunday:** Youth lead Sunday Worship Services in Sanctuary.
- 5/23 **Senior Recognition in worship services AND Senior Banquet from 6:00—8:00 PM.**

For the current Youth Events, see a Calendar or www.BrooklynParkChurch.org/youth.



Pastor Leane Gondek, Ext. 27

Leanne Klein

Assistant Director, Ext. 38

K.Z. Disciples Awards Ceremony TONIGHT

Parents and family members are encouraged to support their kids by attending the Awards Ceremony TONIGHT at 6:30 PM.

K.Z. Disciples Carnival was a Success!

Thanks to ALL who manned the carnival games so that the kids were able to celebrate the past year. Thanks to those who stayed and helped with cleanup, too!

6th Grade Missions Trip

Join us for our next meeting Sunday, May 2, at 12:15 PM in Room 106. Lunch will be provided for kids for \$3. Don't forget to complete your assignments. Questions? Talk with Leane Gondek.

Sign Up for Summer!

Pick up a brochure for all the summer camps and activities going on here! Invite a friend!



MISSIONARY OF THE WEEK

Jerry Skifstad

SEND International

Working with youth and church-planting in Poland

Praise God For:

- The safe and healthy arrival of two new grandchildren, Hannah and Abigail.
- Me finishing and passing my TEFL Correspondence course.
- The approval of a two-year residence card!

Pray for:

- Andrzej and Marlena as they reach out to their neighbors, Damian and Magda.
- Artur to commit himself totally to the Lord.
- My knee to stop giving me problems.
- Wisdom as I begin working with Zbyszek in the area of Youth Ministry.
- God to continue to grow Krzysiek and Ela in their love for Him.
- Good progress in my Polish Language studies—four hours/week (tutor) plus outside the classroom studies.
- Us to see God at work and lives transformed as we minister to students and their families through the Scouting Outreach.

If you would like to email Jerry, his email is jerry@skifstad.com.



ADULT BIBLE FELLOWSHIPS

Looking for a place to belong? Check out an ABF on Sunday mornings.

Newly Marrieds: For young marrieds and engaged couples. Meets at 9:00 AM, Room 112/113.

Mosaic: Multi-ethnic, multi-generational, for singles and couples. Meets at 9:00 AM, Room 108/109.

Salt: Those raising elementary-age children and students Grades 7—12. Meets at 10:30 AM, Room 108/109.

In-Betweeners: Singles and couples, 50's and up. Meets at 10:30 AM, Room 112/113.

Prime Timers: Senior adults. Meets at 10:30 AM, Room 114.