

What is Your Worldview

Acts 17:16–34

I. Does the Gospel provoke you to share your Biblical worldview with others? (vv 16–21)

- Paul’s spirit was provoked—*an intense paroxysm of the spirit, a storm within*
- Three kinds of people present:
 1. Religious people — “Synagogue”
 2. Common citizen — “Marketplace”
 3. Philosophers — “Epicurean and Stoic”
- These people were very much like those who live in our culture today.

II. How do you share a Biblical worldview (the Gospel) in our culture? (vv 22–31)

- Meet people where they live. (vv 22–23)
- Unfold the Biblical truth about God. (vv 24–27a)
 1. God is the Maker, not the one made.
 2. God is the Giver, and has no needs Himself.
 3. God draws men to Himself; He is not hiding.
- Unfold the Biblical truth about man. (vv 27b–31)
 1. The dignity of man created in the image of God
 2. The degradation of man to worship idols
 3. The responsibility of man to repent and believe in Jesus

III. What kind of response should you expect when you share your Biblical worldview? (vv 32–34)

- Some will mock because their pride is threatened. (v 32a)
- Some will delay a response or decision. (v 32b)
- Some will believe. (vv 33–34)

Conclusion:

1. Ask God to move in your heart to see lost people as those in need of hearing the Biblical worldview—the Gospel of Jesus Christ.
2. Don’t be afraid to talk with unbelievers about what they believe. And be ready to share what the Bible says about God, man and Jesus Christ.
3. Expect some to reject and say “no” to the Gospel, but always know that some will believe because God is seeking them.

Next Step Class

The *Next Step Class* is offered on a quarterly basis. The next class will be offered on Saturday, October 15, from 9:00 AM—Noon, in the Conference Room, to explore ministry and membership at BPEFC. We highlight our Core Values, Beliefs, Missions, Local Ministries, Steps to Membership, and create a Personal Ministry Profile based on your personality, possessions (gifts and abilities) and passion (to help you select a place of service). After the class, you have the opportunity to join the church.

Yes! I’m/We’re interested in attending the class on Saturday, October 15.

Name: _____

Address: _____

Phone: _____

(Place form in the Offering or turn in at the Information Desk.)

Sunday Schedule at BPEFC

9:00 AM

Worship Service	Sanctuary
Nursery (Birth to two years)	Room 100
Chicks (Birth date in 2008)	103
Lambs (Birth date in 2007)	103
Giraffes (Birth date in 2006)	104
5s and K (Birth date in 2004 & 2005)	104
Children’s Church (Gr. 1–6)	Fellowship Hall

Adult Bible Fellowships

20–30 Somethings	112/113
Mosaic (Multi-cultural, singles/marrieds)	108/109

10:30 AM

Worship Service	Sanctuary
Nursery (Birth to two years)	Room 100
Chicks (Birth date in 2008)	102
Lambs (Birth date in 2007)	103
Giraffes (Birth date in 2006)	104
Starfish/5s and K (Birth date in 2004 & 2005)	105
Apples/5s and K (Birth date in 2004 & 2005)	106
Route 252 (Grades 1–6)	Fellowship Hall
Living Proof (Grades 7–12)	Youth Room

Adult Bible Fellowships

Salt (Parents of Teens/Young Adults)	114
In-Betweeners (Singles/Marrieds, 50+)	112/113
Prime Timers (Senior Adults)	108/109

BPEFC Pastoral Staff

Rick Ensrud - Senior Pastor - rensrud@bpefc.org - ext. 11

Dan Carlson - Adult Ministry Pastor (50+) - dcarlson@bpefc.org - ext. 12

David Durey - Family Life/Exec. Ministries Pastor - ddurey@bpefc.org - ext. 13

Jeff Gagnon - Executive Ministries/Missions Pastor - jgagnon@bpefc.org - ext. 22

Leane Gondek - Children’s Ministries Pastor - lgondek@bpefc.org - ext. 27

Josh Major - Young Adult Pastor - jmajor@bpefc.org - ext. 14

Nate Miller - Student Ministries Pastor - nmiller@bpefc.org - ext. 15

Luke Turner - Worship Ministries Director - lturner@bpefc.org - ext. 37

September 11, 2011



7849 West Broadway
Brooklyn Park, MN 55445
763-391-6140

Emergency: 763-315-0906
Fax: 763-391-6401
www.BrooklynParkChurch.org

Welcome to Brooklyn Park Church!

We're so glad you have joined us today. Our goal is to help you connect with God in worship and connect with others in meaningful relationships. Please let us know if we can help you in any way.

Worship Services Offered:

- 9:00 AM:** Traditions
10:30 AM: Multi-cultural

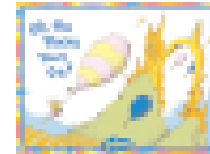
Guests . . . after the service, you are invited to the Guest Reception Area (in the West Foyer) to meet with staff and learn more about our church.

All-Church News

- **Dave Ramsey's Financial Peace University—The Great Recovery:** FREE First Class THIS Thursday, September 15, 6:30 PM (then meets weekly) Whether you have tons of debt or none at all, this class has something for you because it's not just a money class. It's about learning to manage everything God has given you His way. Sign up TODAY in the Foyer.
- **Fall Kickoff: Back to Church Sunday:** September 18, 9:00 & 10:30 AM. Join us as we kick off the ministry year with a new sermon and small group series, *God Quest* (see bulletin tear-off corner). Come back in the evening for a **Picnic Supper and Movie Showing of Soul Surfer**—5:00 PM Supper, 6:00 PM Movie. Bring a friend with you!
- **Seniors Luncheon:** Wednesday, September 21, 12:00 PM. Cost: \$5.00. If you plan on attending, sign up at the Information Desk today.
- **Men's Retreat:** Friday, September 23—Saturday, September 24 at Ruttger's Bay Lake Lodge near Brainerd. Enjoy some time with friends and with God. Cost: \$69—84 depending on room choice. Sign up TODAY in the Foyer.
- **Do the Unthinkable—Scott Rigsby Live:** Sunday, September 25, 9:00 & 10:30 AM Service. Hear the amazing story of a double amputee, world-record tri-athlete and Ironman finisher! His faith in Jesus Christ helped him *Do the Unthinkable!* So what can God do in *your* life? Who do you know that needs to hear a message of hope?
- **Alpha Sunday Nights:** Kickoff Dinner on Sunday, September 25, 5:30 PM. Courses Offered: *Alpha*—Find answers to the meaning of life; *Freedom in Christ*—Resolve issues from your past; *Bible Overview*—Learn to navigate the Scriptures; *Contagious Christian*—Learn ways to share your faith; *Marriage Course*—find tools to improve your marriage. Sign up in the Foyer!
- **Second Harvest Food Distribution:** Friday, September 30, 6:00—8:00 PM. **Volunteers are needed for shifts between 1:00—9:00 PM.** All volunteers (returning and new) must sign up *prior* to each distribution at the Info Desk or the web site: www.BrooklynParkChurch.org/2harvest. If you haven't served at SH before, now is a great time to jump in and help!
- **Waffle Breakfast:** Saturday, October 8, 8:00 AM—Noon. Tickets on sale at the Information Desk. Cost: \$4, Advance Special: \$20 for 10 tickets.

For more information on other church news, see *News & Notes*.

Women's Ministry



Kickoff Brunch

Saturday, September 17, 10:00 AM
 FREE EVENT! Sign up to reserve a spot.

Bible Studies

Three Different Studies Offered; Wednesday PM/Thursday AM, beginning September 21/22

See *News & Notes* for details.



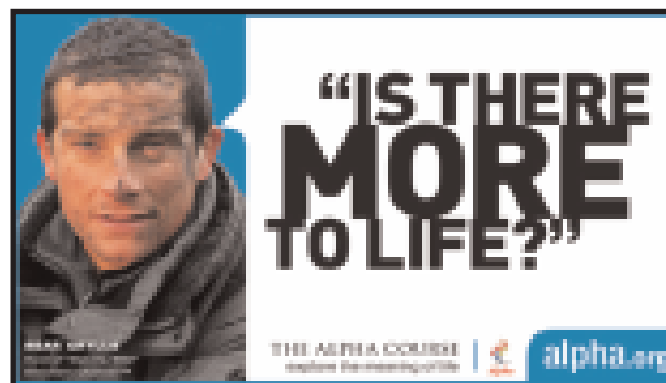
Men's Retreat

September 23—24
 Ruttger's Bay Lodge Retreat
 Sign up in the Foyer TODAY!



Do the Unthinkable! Scott Rigsby Live

Sunday, September 25
 9:00 & 10:30 AM



Weekly Calendar

(For more details, visit www.BrooklynParkChurch.org.)

Sunday, September 11

Monday, September 12

Tuesday, September 13

- 6:00 AM Men's Bible Studies
 6:00 PM Corporate Prayer
 6:00 PM Celebrate Recovery & Support Group Meal and Worship
 7:00 PM Celebrate Recovery & Support Group Meetings

Wednesday, September 14

- 5:45—7:00 AM Intercessors' Prayer Time

Thursday, September 15

- 6:30 PM Financial Peace University

Friday, September 16

Saturday, September 17

- 9:30 AM Let's Go Loafing!
 10:00 AM Women's Brunch

Stewardship Matters

2011—2012 Annual Budget:	1,439,750
Budget needed fiscal year-to-date:	276,880
Giving/Revenue year-to-date:	234,084
Difference in budget needed and giving YTD:	(42,796)
Weekly budget needed:	27,688
Amount received September 4:	23,032
4 Our Future (Capital Campaign) Commitments:	1,050,000
4 Our Future Giving:	698,447



Are you interested in joining a new small group? You can meet people and have an opportunity to study the Word at a deeper level. Groups meet at different locations and times throughout the week. Questions? Call the Church Office.

Name: _____

Address: _____

Phone: _____

E-mail: _____

Best day for me: _____ **Best time for me:** _____