

# Welcome, Scott Rigsby!

## Do the Unthinkable!



### Next Step Class

The *Next Step Class* is offered on a quarterly basis. The next class will be offered on Saturday, October 15, from 9:00 AM—Noon, in the Conference Room, to explore ministry and membership at BPEFC. We highlight our Core Values, Beliefs, Missions, Local Ministries, Steps to Membership, and create a Personal Ministry Profile based on your personality, possessions (gifts and abilities) and passion (to help you select a place of service). After the class, you have the opportunity to join the church.

Yes! I'm/We're interested in attending the class on Saturday, October 15.

Name: \_\_\_\_\_

Address: \_\_\_\_\_

Phone: \_\_\_\_\_

(Place form in the Offering or turn in at the Information Desk.)

## Sunday Schedule at BPEFC

### 9:00 AM

<b>Worship Service</b>	Sanctuary
Nursery (Birth to two years)	Room 100
Chicks (Birth date in 2009)	103
Lambs (Birth date in 2008)	103
Giraffes (Birth date in 2007)	104
5s and K (Birth date in 2005 & 2006)	104
Children's Church (Gr. 1-6)	Fellowship Hall

### Adult Bible Fellowships

20-30 Somethings (Fall Focus: Parenting)	112/113
Mosaic (Singles/Marrieds, 40s & 50s)	108/109

### 10:30 AM

<b>Worship Service</b>	Sanctuary
Nursery (Birth to two years)	Room 100
Chicks (Birth date in 2009)	102
Lambs (Birth date in 2008)	103
Giraffes (Birth date in 2007)	104
Starfish/5s and K (Birth date in 2005 & 2006)	105
Apples/5s and K (Birth date in 2005 & 2006)	106
Route 252 Oasis (Grades 1-6)	Fellowship Hall
Living Proof (Grades 7-12)	Youth Room

### Adult Bible Fellowships

Salt (Parents of Pre-Teens-Young Adults)	114
In-Betweeners (Singles/Marrieds, 55+)	112/113
Prime Timers (Singles/Marrieds, 70+)	

## BPEFC Pastoral Staff

**Rick Ensrud** - Senior Pastor - rensrud@bpefc.org - ext. 11

**Dan Carlson** - Adult Ministry Pastor (50+) - dcarlson@bpefc.org - ext. 12

**David Durey** - Family Life/Exec. Ministries Pastor - ddurey@bpefc.org - ext. 13

**Jeff Gagnon** - Executive Ministries/Missions Pastor - jgagnon@bpefc.org - ext. 22

**Leane Gondek** - Children's Ministries Pastor - lgondek@bpefc.org - ext. 27

**Josh Major** - Young Adult Pastor - jmajor@bpefc.org - ext. 14

**Nate Miller** - Student Ministries Pastor - nmiller@bpefc.org - ext. 15

**Luke Turner** - Worship Ministries Director - lturner@bpefc.org - ext. 37

September 25, 2011



7849 West Broadway  
Brooklyn Park, MN 55445  
763-391-6140  
Emergency: 763-315-0906  
Fax: 763-391-6401  
www.BrooklynParkChurch.org

## Welcome to Brooklyn Park Church!

We're so glad you have joined us today. Our goal is to help you connect with God in worship and connect with others in meaningful relationships. Please let us know if we can help you in any way.

### Worship Services Offered:

**9:00 AM:** Traditions

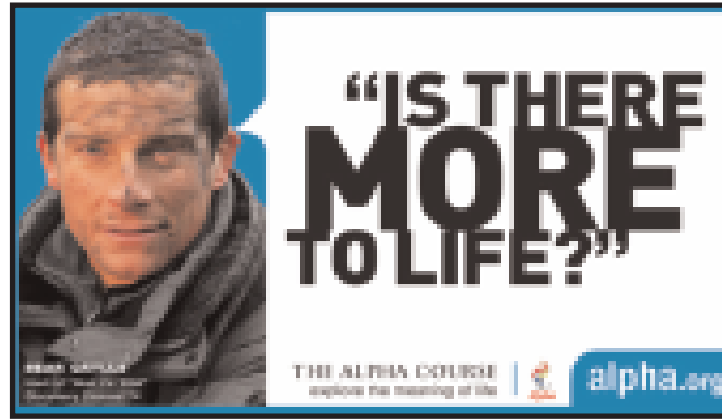
**10:30 AM:** Multi-cultural

Guests . . . after the service, you are invited to the Guest Reception Area (in the West Foyer) to meet with staff and learn more about our church.

## All-Church News

- **Alpha Sunday Nights:** Come for a Kickoff Dinner TONIGHT at 5:30 PM. Courses Offered: *Alpha*—Find answers to the meaning of life; *Freedom in Christ*—Resolve issues from your past; *Bible Overview*—Learn to navigate the Scriptures; *Contagious Christian*—Learn ways to share your faith; *Marriage Course*—find tools to improve your marriage. Sign up in the Foyer!
- **New Fall Small Groups:** If you're looking for a way to meet people and get connected, a small group is just what you need. New groups are forming now. Stop by the table in the Foyer.
- **Cody James in Concert:** Tuesday, September 27, 7:00 PM. (Dinner at 6:00.) *Celebrate Recovery* invites you to hear music and a message of hope for those struggling with hurts, habits and hang-ups.
- **Awana for Kids & Small Groups for Student Ministries:** Wednesdays, 6:30 PM. We just got started last week . . . it's not too late to join us!
- **Second Harvest Food Distribution:** Friday, September 30, 6:00—8:00 PM. **Volunteers are needed for shifts between 1:00—9:00 PM.** All volunteers (returning and new) must sign up *prior* to *each* distribution at the Info Desk or the web site: [www.BrooklynParkChurch.org/2harvest](http://www.BrooklynParkChurch.org/2harvest). If you haven't served at SH before, now is a great time to jump in and help!
- **Waffle Breakfast:** Saturday, October 8, 8:00 AM—Noon. Tickets on sale at the Information Desk. Cost: \$4, Advance Special: \$20 for 10 tickets.
- **Next Step Class:** Saturday, October 15, 9:00 AM—12:00 PM. Learn more about our church and membership. If you plan on attending, please fill out the Bulletin tear-off corner.
- **Important Note:** To respect our worship time together on Sundays, please turn off all electronic equipment (cell phones, pagers, etc.). Thank you!

For more information on other church news, see *News & Notes*.



## Second Harvest Volunteers Needed!

Friday, September 30

Be a blessing . . . and be blessed . . .  
as we serve our community!  
Help is needed in the afternoon and evening.



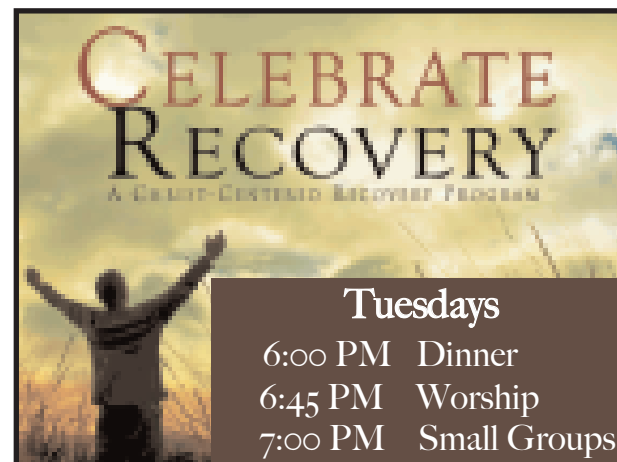
**\*Parking Lot help especially needed beginning at 3:30 PM.\***

**It's coming October 8, 8AM-12PM!**



**Bring a friend\*, REGISTER FOR  
UPWARD SPORTS BASKETBALL  
& get a ticket for a free WAFFLE  
BREAKFAST that same day!**

(\*someone who doesn't normally come to church here)



## Weekly Calendar

(For more details, visit [www.BrooklynParkChurch.org](http://www.BrooklynParkChurch.org).)

**Sunday, September 25**

5:30 PM Alpha Sunday Nights

**Monday, September 26**

**Tuesday, September 27**

6:00 AM Men's Bible Studies

6:00 PM Corporate Prayer

6:00 PM *Celebrate Recovery* &

Support Group Meal and Worship

7:00 PM *Celebrate Recovery*: CODY JAMES &

Support Group Meetings

**Wednesday, September 28**

5:45—7:00 AM

Intercessors' Prayer Time

6:30 PM Kids *Awana*

Student Ministries Small Groups

Women's Bible Study

**Thursday, September 29**

9:30 AM

Women's Bible Study

6:30 PM *Financial Peace University*

**Friday, September 30**

6:00 PM

*Second Harvest Food Distribution*

**Saturday, October 1**

## Stewardship Matters

2011—2012 Annual Budget:	1,439,750
Budget needed fiscal year-to-date:	332,256
Giving/Revenue year-to-date:	281,286
Difference in budget needed and giving YTD:	(50,970)
Weekly budget needed:	27,688
Amount received September 18:	22,063
4 <i>Our Future</i> (Capital Campaign) Commitments:	1,050,000
4 <i>Our Future</i> Giving:	702,857



Are you interested in joining a new small group? You can meet people and have an opportunity to study the Word at a deeper level. Groups meet at different locations and times throughout the week. Questions? Call the Church Office.

**Name:** \_\_\_\_\_

**Address:** \_\_\_\_\_

**Phone:** \_\_\_\_\_

**E-mail:** \_\_\_\_\_

**Best day for me:** \_\_\_\_\_ **Best time for me:** \_\_\_\_\_

(Place form in the Offering or turn in at the Information Desk.)