

Turning the World Right-Side Up

Acts 17:1–15

Introduction: Plans and Expectations

I. *Turning the World Right-Side Up* happens when we have a plan to tell one message. (vv 1–3)

II. So let's talk about expectations . . .

- When you tell others about Jesus, *expect* some to disbelieve and oppose you, but don't take it personally. (vv 5–9, 13–15)
- When you tell others about Jesus, *expect* some to believe and grow, so don't give up. (vv 5, 10–12)

Questions for Thought:

1. Do I have a plan to talk with others about Jesus?
2. If someone gets upset when I tell them about Jesus, do I take it personally?
3. Am I determined to keep telling people about Jesus, knowing that some will believe and grow?

Next Step Class

The *Next Step Class* is offered on a quarterly basis. The next class will be offered on Saturday, October 15, from 9:00 AM–Noon, in the Conference Room, to explore ministry and membership at BPEFC. We highlight our Core Values, Beliefs, Missions, Local Ministries, Steps to Membership, and create a Personal Ministry Profile based on your personality, possessions (gifts and abilities) and passion (to help you select a place of service). After the class, you have the opportunity to join the church.

Yes! I'm/We're interested in attending the class on Saturday, October 15.

Name: _____

Address: _____

Phone: _____

(Place form in the Offering or turn in at the Information Desk.)

Sunday Schedule at BPEFC

9:00 AM

| Worship Service | Sanctuary |
|--------------------------------------|---------------------------------|
| Nursery (Birth to two years) | Room 100 |
| Chicks (Birth date in 2008) | 103 |
| Lambs (Birth date in 2007) | 103 |
| Giraffes (Birth date in 2006) | 104 |
| 5s and K (Birth date in 2004 & 2005) | 104 |
| Children's Church (Gr. 1–6) | Cancelled Today Fellowship Hall |

Adult Bible Fellowships

| | |
|---|---------|
| 20–30 Somethings | 112/113 |
| Mosaic (Multi-cultural, singles/marrieds) | 108/109 |

10:30 AM

| Worship Service | Sanctuary |
|---|---------------------------------|
| Nursery (Birth to two years) | Room 100 |
| Chicks (Birth date in 2008) | 102 |
| Lambs (Birth date in 2007) | 103 |
| Giraffes (Birth date in 2006) | 104 |
| Starfish/5s and K (Birth date in 2004 & 2005) | 105 |
| Apples/5s and K (Birth date in 2004 & 2005) | 106 |
| Route 252 (Grades 1–6) | Cancelled Today Fellowship Hall |
| Living Proof (Grades 7–12) | Youth Room |

Adult Bible Fellowships

| | |
|---------------------------------------|---------|
| Salt (Elem. & Youth Parents) | 114 |
| In-Betweeners (Singles/Marrieds, 50+) | 112/113 |
| Prime Timers (Senior Adults) | 108/109 |

BPEFC Pastoral Staff

- Rick Ensrud** - Senior Pastor - rensrud@bpefc.org - ext. 11
Dan Carlson - Adult Ministry Pastor (50+) - dcarlson@bpefc.org - ext. 12
David Durey - Family Life/Exec. Ministries Pastor - ddurey@bpefc.org - ext. 13
Jeff Gagnon - Executive Ministries/Missions Pastor - jgagnon@bpefc.org - ext. 22
Leane Gondek - Children's Ministries Pastor - lgondek@bpefc.org - ext. 27
Josh Major - Young Adult Pastor - jmajor@bpefc.org - ext. 14
Nate Miller - Student Ministries Pastor - nmiller@bpefc.org - ext. 15
Luke Turner - Worship Ministries Director - lturner@bpefc.org - ext. 37



7849 West Broadway
 Brooklyn Park, MN 55445
 763-391-6140
 Emergency: 763-315-0906
 Fax: 763-391-6401
 www.BrooklynParkChurch.org

September 4, 2011

Welcome to Brooklyn Park Church!

We're so glad you have joined us today. Our goal is to help you connect with God in worship and connect with others in meaningful relationships. Please let us know if we can help you in any way.

Worship Services Offered:

9:00 AM: Traditions

10:30 AM: Multi-cultural

Guests . . . after the service, you are invited to the Guest Reception Area (in the West Foyer) to meet with staff and learn more about our church.

All-Church News

- **Route 252 Kids:** Grades 1–6, no Route 252 today; join your family in the Sanctuary. REMEMBER to register TODAY in the Foyer for **AWANA** and **Upward Sports!** All kids are welcome . . . invite a friend!
- **Student Ministries Fun This Week: Bible Study**—Tuesday, September 6, 7:00–8:00 PM, at the Miller's apartment; **House Party at the Tizzano's**—Wednesday, September 7, 6:30–8:00 PM, details in the Youth Room/website. Questions? Talk with Nate. **Note: Wednesday Small Groups begin 9/21.**
- **Dave Ramsey's Financial Peace University—The Great Recovery:** — **FREE** Preview/Overview Class THIS Thursday, September 8, 6:30 PM — **FREE** First Class on Thursday, September 15, 6:30 PM (then meets weekly) If you're in debt, you'll learn how to get out and stay out for the rest of your life! But whether you have tons of debt or none at all, this class has something for you because it's not just a money class. It's about learning to manage everything God has given you His way. Sign up TODAY in the Foyer.
- **Fall Kickoff: Back to Church Sunday:** September 18, 9:00 & 10:30 AM. Join us as we kick off the ministry year with a new sermon and small group series, **God Quest** (see bulletin tear-off corner). Come back in the evening for a **Picnic Supper and Movie Showing of Soul Surfer**—5:00 PM Supper, 6:00 PM Movie. Bring a friend with you!
- **Men's Retreat:** Friday, September 23—Saturday, September 24 at Ruttger's Bay Lake Lodge near Brainerd. Enjoy some time with friends and with God. Cost: \$69–84 depending on room choice. Sign up TODAY at the Adult Kiosk.
- **Do the Unthinkable—Scott Rigsby Live:** Sunday, September 25, 9:00 & 10:30 AM Service. Hear the amazing story of a double amputee, world-record tri-athlete and Ironman finisher! His faith in Jesus Christ helped him *Do the Unthinkable!* So what can God do in *your* life? Who do you know that needs to hear a message of hope? Invite cards will be available soon.
- **Alpha Sunday Nights:** Kickoff Dinner on Sunday, September 25, 5:30 PM. Courses Offered: *Alpha*—Find answers to the meaning of life; *Freedom in Christ*—Resolve issues from your past; *Bible Overview*—Learn to navigate the Scriptures; *Contagious Christian*—Learn ways to share your faith; *Marriage Course*—find tools to improve your marriage. Sign-up begins soon!

For more information on other church news, see *News & Notes*.

**On your mark,
Get set,
Go Register!**



Registration at the Route 252 Kiosk
(by the Fellowship Hall)

Women's Ministry



Kickoff Brunch

Saturday, September 17, 10:00 AM

FREE EVENT! Sign up next Sunday to reserve a spot.

Bible Studies

Three Different Studies Offered; Wednesday PM/Thursday AM, beginning September 21/22

See *News & Notes* for details.

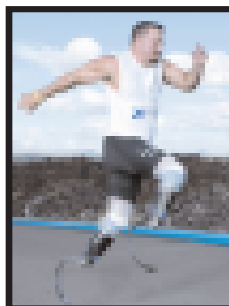


Men's Retreat

September 23—24

Ruttger's Bay Lodge Retreat

Sign up in the Foyer TODAY!



Do the Unthinkable!

Scott Rigsby Live

Sunday, September 25

9:00 & 10:30 AM

Weekly Calendar

(For more details, visit www.BrooklynParkChurch.org.)

Sunday, September 4

Monday, September 5

**Labor Day
Office Closed**

Tuesday, September 6

6:00 AM Men's Bible Studies
6:00 PM Corporate Prayer
6:00 PM Celebrate Recovery & Support Group Meal and Worship
6:30 PM Quilters' Fellowship
7:00 PM Celebrate Recovery & Support Group Meetings

Wednesday, September 7

5:45–7:00 AM Intercessors' Prayer Time
6:30 PM Student Ministries House Party at Tizzano's

Thursday, September 8

6:30 PM *Financial Peace University*

Friday, September 9

Saturday, September 10

Stewardship Matters

| | |
|--|-----------|
| 2011–2012 Annual Budget: | 1,439,750 |
| Budget needed fiscal year-to-date: | 249,192 |
| Giving/Revenue year-to-date: | 211,052 |
| Difference in budget needed and giving YTD: | (38,140) |
| Weekly budget needed: | 27,688 |
| Amount received August 28: | 22,856 |
| 4 Our Future (Capital Campaign) Commitments: | 1,100,000 |
| 4 Our Future Giving: | 697,210 |



Are you interested in joining a new small group? You can meet people and have an opportunity to study the Word at a deeper level. Groups meet at different locations and times throughout the week. Questions? Call the Church Office.

Name: _____

Address: _____

Phone: _____

E-mail: _____

Best day for me: _____ **Best time for me:** _____